



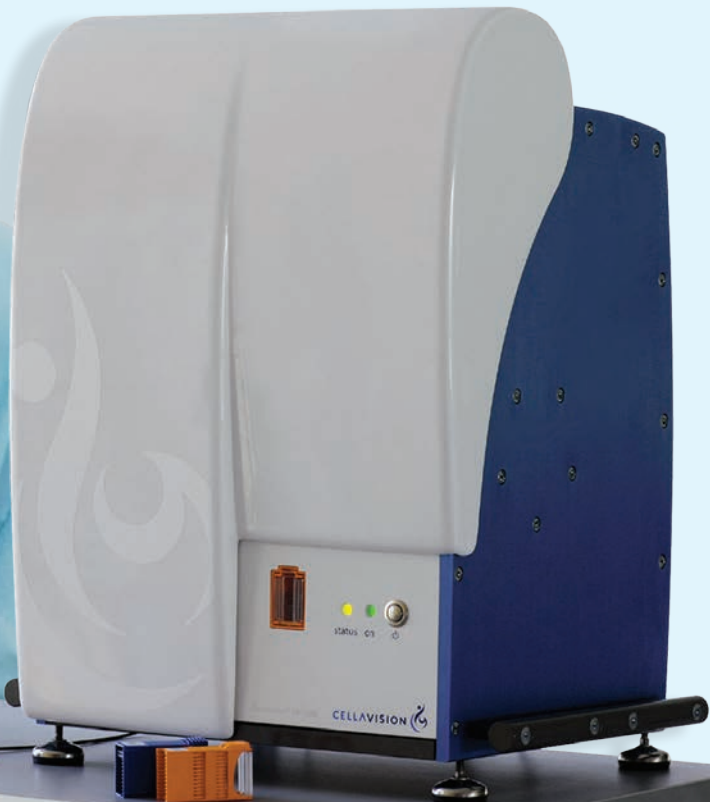
CELLAVISION® DM1200 Cell Image Analysis System

Designed for the Mid-Volume Lab

OTHERS TALK
SYSMEX
DELIVERS

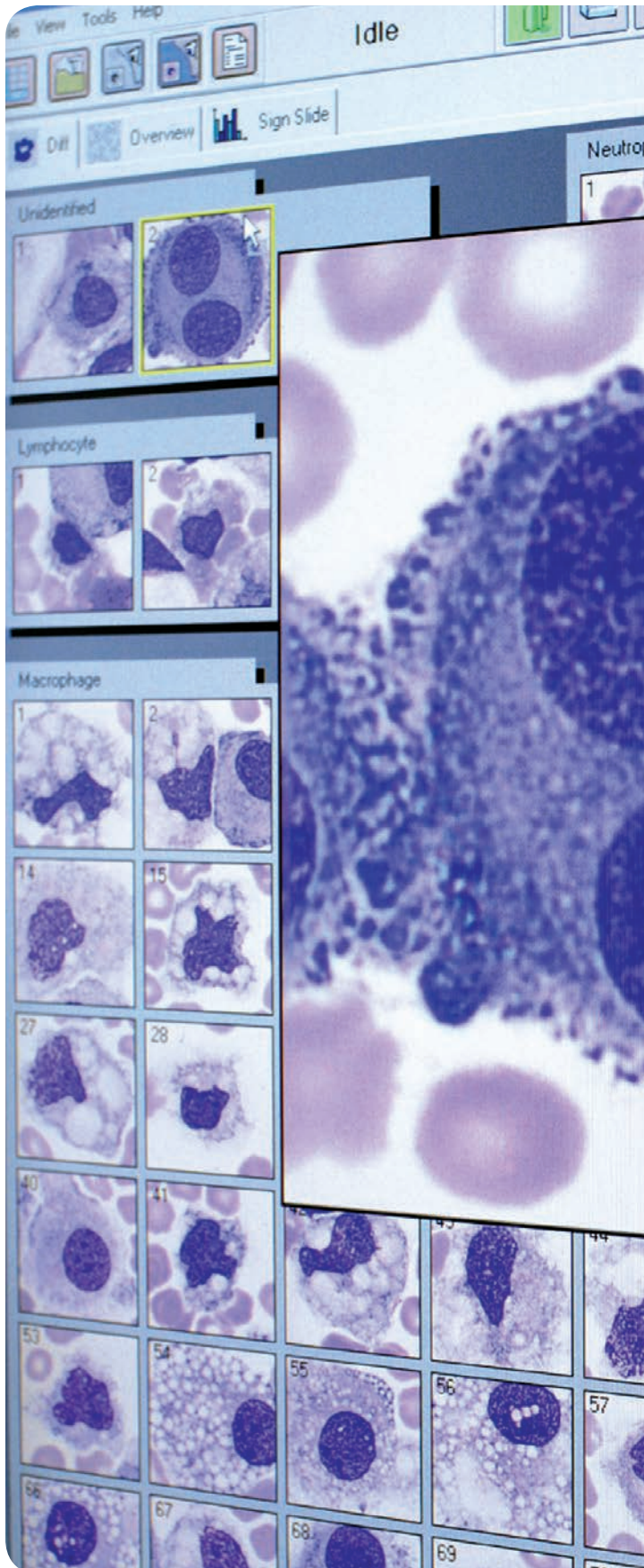
Count on Sysmex to do more than
just talk about automation.

To see all that Sysmex delivers, and
what customers are saying, go to
www.sysmex.com/delivers



System Overview

CellaVision DM1200 can easily become a part of any hematology workflow.



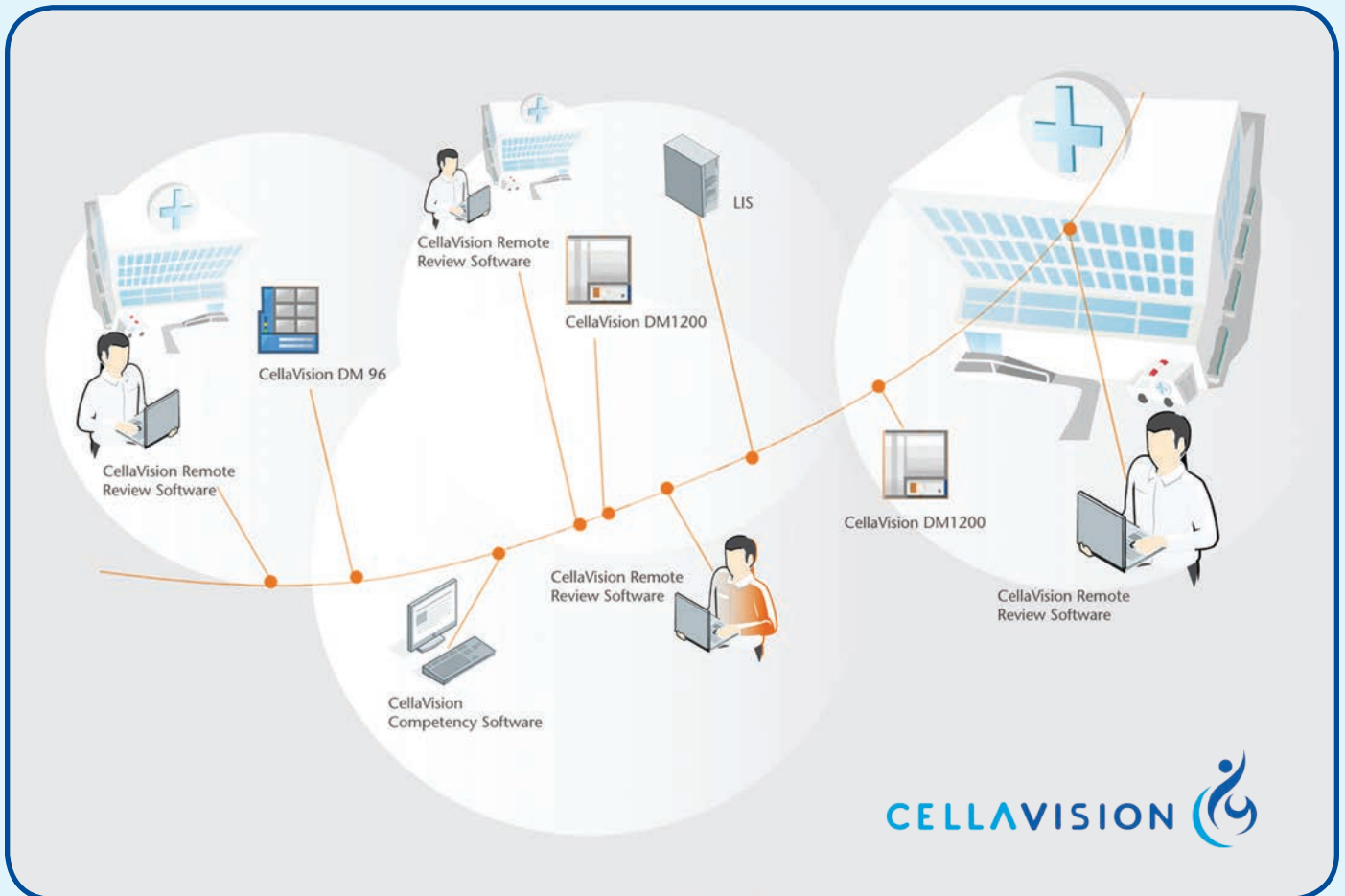
Efficiency, Proficiency & Collaboration

The CellaVision DM1200 offers a high degree of automation, allowing for an escalating workload without increasing labor. This technology delivers improved ergonomics when compared to using a microscope. It also allows for more effective, on-going education and competency assessment of all medical technologists.

Key Benefits:

- Automatically locates and presents images of cells on blood smears
 - Differential count of white blood cells
 - Characterization of red blood cell morphology and platelet estimation
- Automates workflow
 - Reduces the time consumed on smear review, allowing technologists more opportunity for other tasks.
 - Streamlines collaboration with medical services to provide pertinent diagnostic information.
- Enables training and morphological standardization
 - Enhances training/cross-training for staff throughout the laboratory by utilizing large, customizable, on-board reference libraries and optional competency software.
- Scans a user-defined part of a microscope slide
 - Allows for discussion between clinicians regardless of physical location.
 - Regions of interest on the slide can be tagged and comments can be added. Images and comments can be exported to presentations and educational materials.

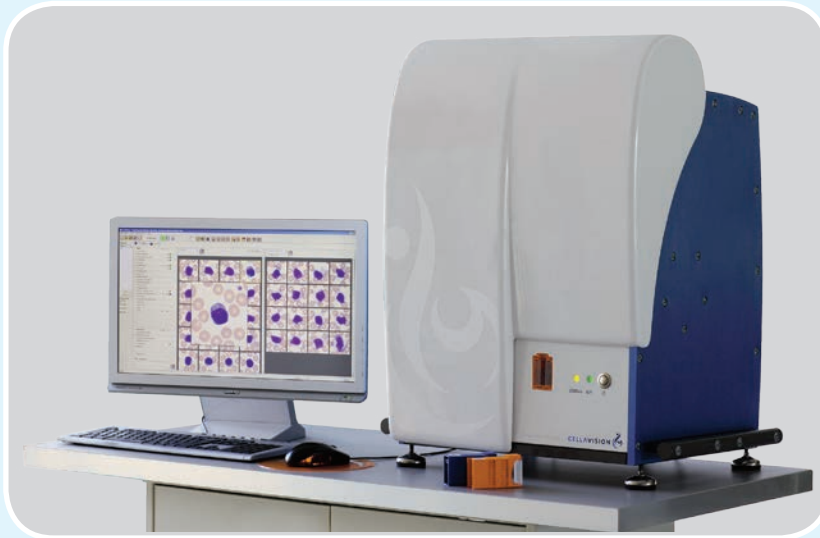
Share Results Anywhere



The CellaVision DM1200 can share a database with other CellaVision DM analyzers installed at the same facility or a remote location. This allows integrated delivery networks to flexibly utilize remote staffing and expertise for both morphological and pathological reviews.

The DM1200 supports bi-directional LIS communication, which reduces the potential for transcription errors and streamlines the reporting of results.

Efficiency, Proficiency, Collaboration

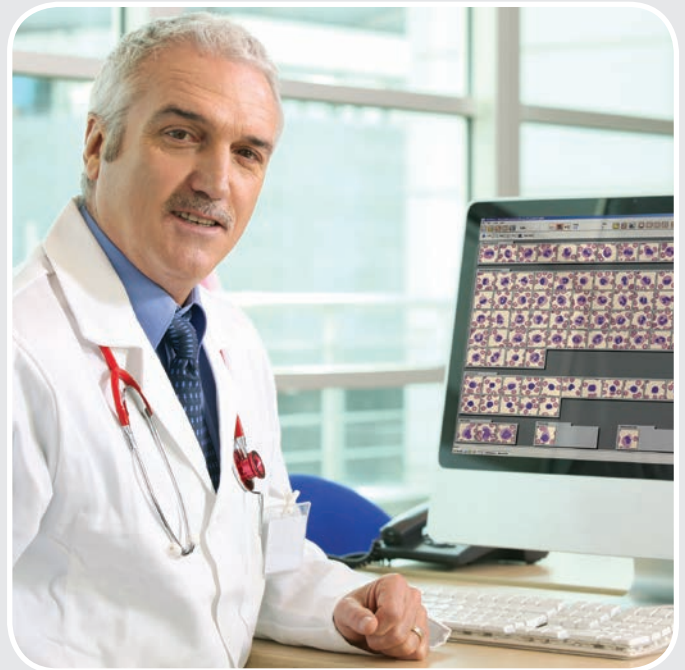


DM1200 Efficiency and Proficiency

The DM1200 can reduce the time spent performing differentials or training new technologists. With the optional Competency Software Package, managers can set up cases to test and document the proficiency of their staff.

DM1200 offers a high degree of automation

- Optimized Workload Management
- Reduced Eye Strain
- On-going Education
- Competency Assessment



DM1200 Collaboration

Functional Review Stations enable supervisory review, inter/intra lab comparison, pathology consultation, and real time collaboration with clinicians through network integration.

Facilitate Collaboration with Clinicians

- Provides pertinent clinical information
- Enables remote consultaion
- Tags specific areas of slides to enable sharing

Specifications

PERFORMANCE SPECIFICATIONS

Slide Preparation Method (wedge)	<ul style="list-style-type: none">Automated slide maker and stainerHemaPrep®/MiniPrep® blood smearing deviceManual smears
Stains	Romanowsky stains (May Grünwald Giesma, Wright-Giesma, Wright)
Number of Cells Counted	User definable (Default: 100)
Slide Handling	Requires barcode labeled slides with clipped/round corners <ul style="list-style-type: none">Slides are loaded into a magazine with the capacity of 12 slides
Slide Capacity	On board capacity of 12 slides
Slide Image Size	100 WBC's: ~ 5MB 100 WBC + RBC: ~ 6MB 100 WBC + RBC + PLT: ~ 6MB
Digital Slides	Up to 20 slides/hr for 10mm x 10mm at 10x Up to 2 slides/hr for 10mm x 10mm at 50x
Immersion Oil	<ul style="list-style-type: none">Automated slide maker and stainers
Quality Control	Cell location accuracy test for the verification of the hardware and stain quality
Archiving of Results and Images	Supported media: CD-R/CD-RW and LAN
Storage Capacity	Primary storage: on local hard drive up to 4,000 slides (20 GB) <ul style="list-style-type: none">Secondary storage: unlimited when transferred to external storage media

INSTRUMENT SPECIFICATIONS

Printer Support	Laser/inkjet printers supported by Windows® XP
Communications	Bi-directional LIS support, ASTM <ul style="list-style-type: none">Ethernet 10/100 MbpsMultiple CellaVision DM analyzers can share a database
System Components	Sliding scanner unit <ul style="list-style-type: none">CellaVision® DM SoftwarePC with Windows XP
Electronic Specifications	Slide Scanning Unit: 1A/2A <ul style="list-style-type: none">Voltage input 230/115 VACCurrent input: System computer: 3A/6A
Size (W x D x H)	576 x 450 x 710mm 22.7 x 17.7 x 28.0 inches
Weight	80 kg/176 lbs
Throughput	Peripheral Blood <ul style="list-style-type: none">Up to 20 slides/hour for complete differential (100 WBC+RBC+PLT)
Accessories	<ul style="list-style-type: none">Barcode labeled slide magazinesImmersion oil packsQC barcode labels

Sysmex Corporation
1-5-1 Wakinohama-Kaigandori,
Chuo-ku, Kobe 651-0073, Japan
Tel. +81 (78) 265-0521
Fax +81 (78) 265-0530
www.sysmex.co.jp

Sysmex America, Inc.
One Nelson C. White Pkwy,
Mundelein, IL 60060, U.S.A.
Tel. +1 (847) 996-4500
Fax +1 (847) 996-4397
www.sysmex.com/us

Sysmex Canada, Inc.
5045 Oribitor Drive,
Building 9, Suite 401
Mississauga, ON L4W 4Y4, Canada
Tel. +1 (905) 366-7900
Fax +1 (905) 366-7899
www.sysmex.ca

Sysmex do Brasil Indústria e Comércio Ltda
Rua Joaquim Nabuco, 615 - Bairro Cidade Jardim,
São José dos Pinhais
Paraná - Brasil - CEP 83040-210
Tel. +55 (41) 2104-1314
Fax +55 (41) 2104-1300
www.sysmex.com.br

